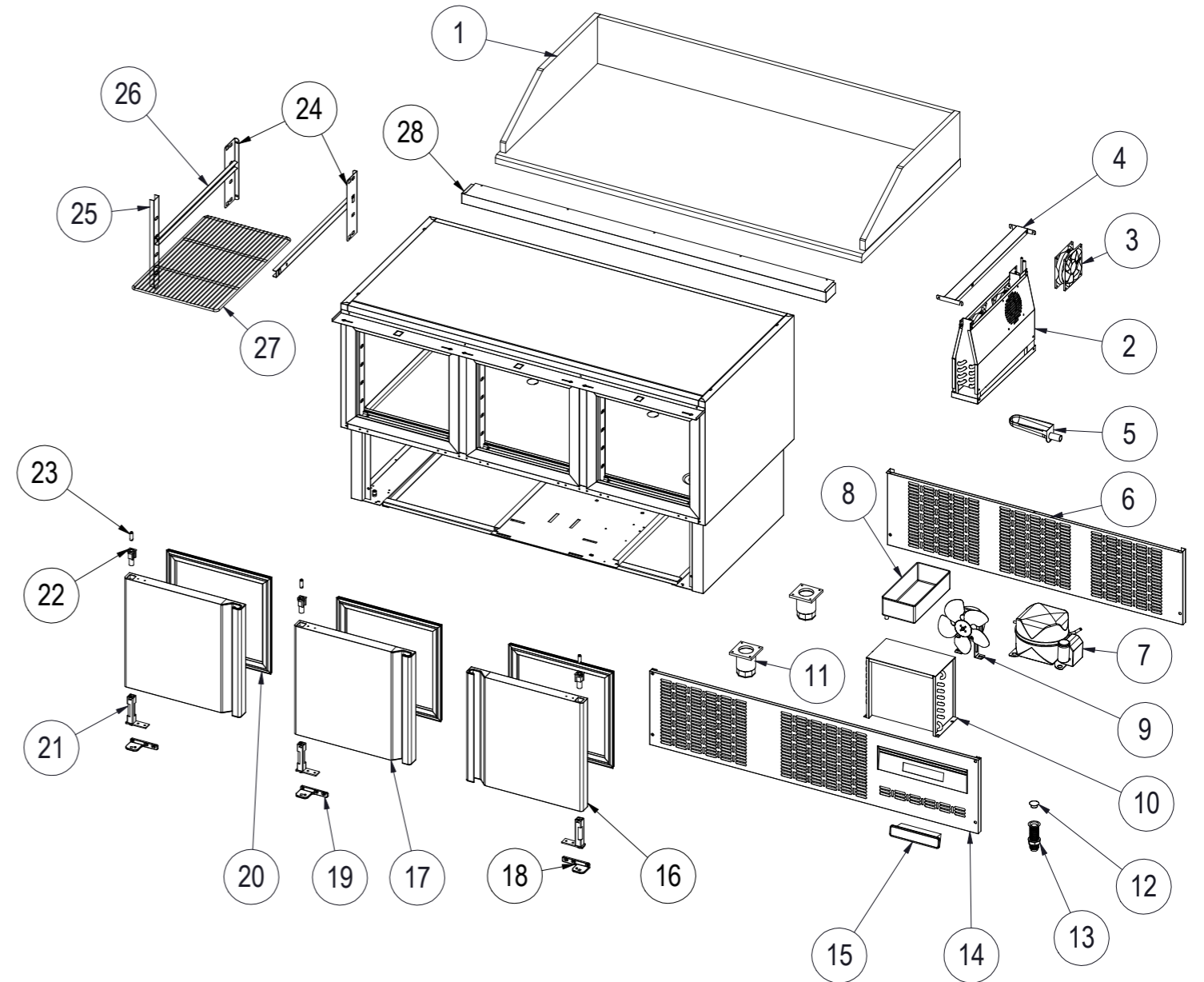


Nº	DESCRIPCIÓN	DESCRIPTION	DMFPP-140
1	ENCIMERA GRANITO	GRANITE WORKTOP	6031010153
	PETO LATERAL GRANITO	SIDE GRANITE UPSTAND	6031010112
	PETO TRASERO GRANITO	REAR GRANITE UPSTAND	6031010127
2	EVAPORADOR DMFPP	EVAPORATOR DMFPP	6029010224
3	VENTILADOR EVAPORADOR	EVAPORATOR FAN	6021050006
4	TAPA EVAPORADOR	EVAPORATOR COVER	M109051403
5	DESAGUE CANALIZADOR	DRAIN CANAL	6003010184
6	REJILLA TRASERA MOTOR	REAR VENTILATION GRILLE	M109051319
7	COMPRESOR DMFPP	COMPRESSOR DMFPP	6021010236
8	BANDEJA EVAP. AUTOM. DMFPP	AUTOMATIC EVAP. TRAY DMFPP	6003010023
9	VENTILADOR CONDENSADOR DMFPP	CONDENSER FAN DMFPP	6021050126
	ASPA VENT. DEL COND. DMFPP	CONDENSER FAN BLADE DMFPP	6021050094
10	CONDENSADOR DMFPP	CONDENSER DMFPP	6029020002
11	PATA REGULABLE	ADJUSTABLE FEET	6007050079
12	TAPÓN DESAGUE 3/4	DRAIN CAP 3/4	6003010262
13	DESAGUE 3/4	DRAIN TUBE 3/4	6003010326
14	REJILLA CUADRO MANDOS	CONTROL PANEL GRILLE	M109010167
15	TERMOSTATO	THERMOSTAT	6021350114
	SONDA	PROBE	6021350083
16	PUERTA APER. DCHA DMFPP	RIGHT OPENING DOOR DMFPP	M169010103
17	PUERTA APER. IZQ DMFPP	LEFT OPENING DOOR DMFPP	M169010085
18	SOP. BISAGRA INF. DCHA.	LOWER RIGHT HINGE SUPPORT	6033010099
19	SOP. BISAGRA INF. IZQ.	LOWER LEFT HINGE SUPPORT	6033010098
20	BURLETE	SEAL	6045010120
21	BISAGRA DE TORSIÓN	TORSION HINGE	6033010100
22	CAJA ALOJAMIENTO MUELLE	HINGE PIN SUPPORT	6003010136
23	EJE PUERTA	SPLINDE DOOR	6033090064
24	CREMALLERA RESPALDO	BACK SHELF RACK	M109011567
25	CREMALLERA MARCO	FRONT SHELF RACK	M109011565
26	JUEGO DE GUÍAS "U" 562mm	SET OF SHELF SLIDES "U" 562mm	6033050027
27	PARRILLA	SHELF	6027010003
28	EMBELLECEDOR FRONTAL S/E	FRONT WHELL TRIM S/E	M109011569

Gas R290



Nº	DESCRIPCIÓN	DESCRIPTION	DMFPP-140
2*	EVAPORADOR DMFPP	EVAPORATOR DMFPP	6029010224
7*	COMPRESOR DMFPP	COMPRESSOR DMFPP	6021010142
9*	VENTILADOR CONDENSADOR DMFPP	CONDENSER FAN DMFPP	6021050106
	ASPA VENT. DEL COND. DMFPP	CONDENSER FAN BLADE DMFPP	6021050080
10*	CONDENSADOR DMFPP	CONDENSER DMFPP	6029020003

*Gas opcional R-134a (Optional gas R-134a)